

COVID-19 Alert : 18 April 2021



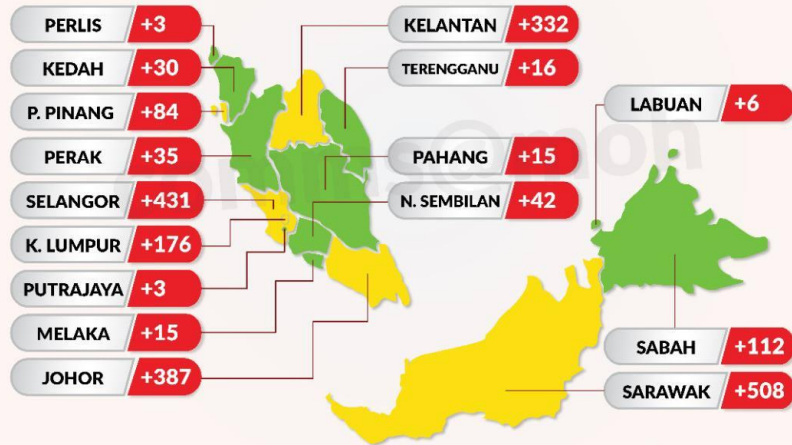
STATUS TERKINI COVID-19 MALAYSIA

KES BAHARU MENGIKUT NEGERI

18.4.2021

Jumlah kes baharu
2,195

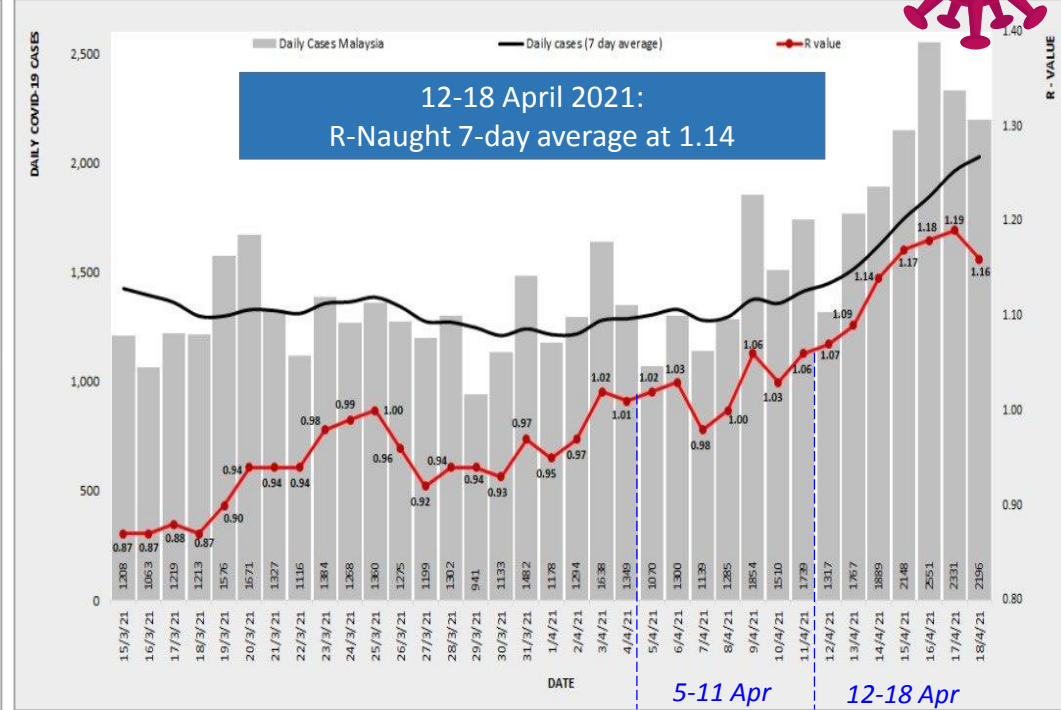
Jumlah keseluruhan kes
375,054



PERINTAH KAWALAN PERGERAKAN PEMULIHAN (PKPP)
PERINTAH KAWALAN PERGERAKAN BERSYARAT (PKPB)

NEGERI

JUMLAH KES BAHARU



5-11 Apr

12-18 Apr

Highlights (as at 18 Apr 2021):

- 2,195 new cases, highest increase in Sarawak (+508) followed by Selangor (+431) and Johor (+387)
- Identified 5 new infection clusters, with 3 involving workplaces, 1 cluster from community and 1 cluster from educational institution.
- Weekly data of R-Naught have increased by 11.5% from previous week (5-11 April, average at 1.025)
- However, based on daily data, R-Naught has declined from 1.19(17 Apr) to 1.16 (18 Apr)



INFO on “Casual Contact” status received via MySejahtera

If you receive this in your MySejahtera app,

Don't panic and please remain calm

You receive this because you had been in contact with a COVID-19 positive case at a particular place and time based on MySejahtera Check-Ins unknowingly by the individuals.

With that, your profile status in MySejahtera change to “Low Risk – casual

What you could do

- ✔ Continue working in the office and to practice strict SOPs at all times, especially in public places
- ✔ Put on your mask and observe physical distancing of at least 1 meter apart.
- ✔ Conduct self-assessment daily my MySejahtera app for 14 days.
- ✔ Visit your nearest health care facility if you develop symptom(s) for further assessment .

What you need not do

- ✗ RT-PCR testing unless you develop symptom(s)
- ✗ Self-quarantine at home



STAY CALM



COVID-19
#KITAMESTIMENANG

HUKUM UJIAN SARINGAN COVID-19 DI BULAN RAMADAN

NASOPHARYNGEAL

Alat swab akan dimasukkan ke dalam rongga hidung individu yang menjalani ujian saringan COVID-19 sehingga ke kawasan *Nasopharynx* dengan kedalaman lebih kurang 4.8 cm bagi kanak-kanak dan 8 - 12 cm bagi orang dewasa untuk mengambil sampel mukus



OROPHARYNGEAL SWAB

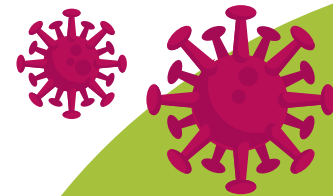
Alat swab akan dimasukkan ke dalam mulut hingga ke kawasan *Oropharynx*, iaitu di belakang anak tekak bagi mengambil sampel mukus



Alat Pengambilan
Sampel

Prosedur saringan bagi mengesan penyakit COVID-19 adalah dengan mengambil sampel lendir (mukus) yang berada di dalam hidung sehingga ke kawasan *Nasopharynx* (anak tekak) adalah **TIDAK MEMBATALKAN PUASA**. Ianya selaras dengan keputusan Jawatankuasa Muzakarah Kebangsaan MKI Kalian Ke-87 pada 23 hingga 25 Jun 2009 yang telah memperakukan Panduan Berpuasa Bagi Pesakit

REMINDER



Bersama
Hentikan
Wabak
Covid-19



Penjarakan Fizikal



Selalu Membasuh
Tangan



Sentiasa Memakai
Pelitup Muka

**Jika setiap rakyat di negara ini
kekalkan disiplin dan patuhi SOP,
maka kita pasti akan dapat memutuskan
rantai jangkitan Covid-19.**



Bersama
Hentikan
Wabak
Covid-19



**Kelonggaran yang diberikan oleh Kerajaan
bukanlah lesen untuk kita tidak mematuhi SOP.
Terus amalkan norma baharu.**