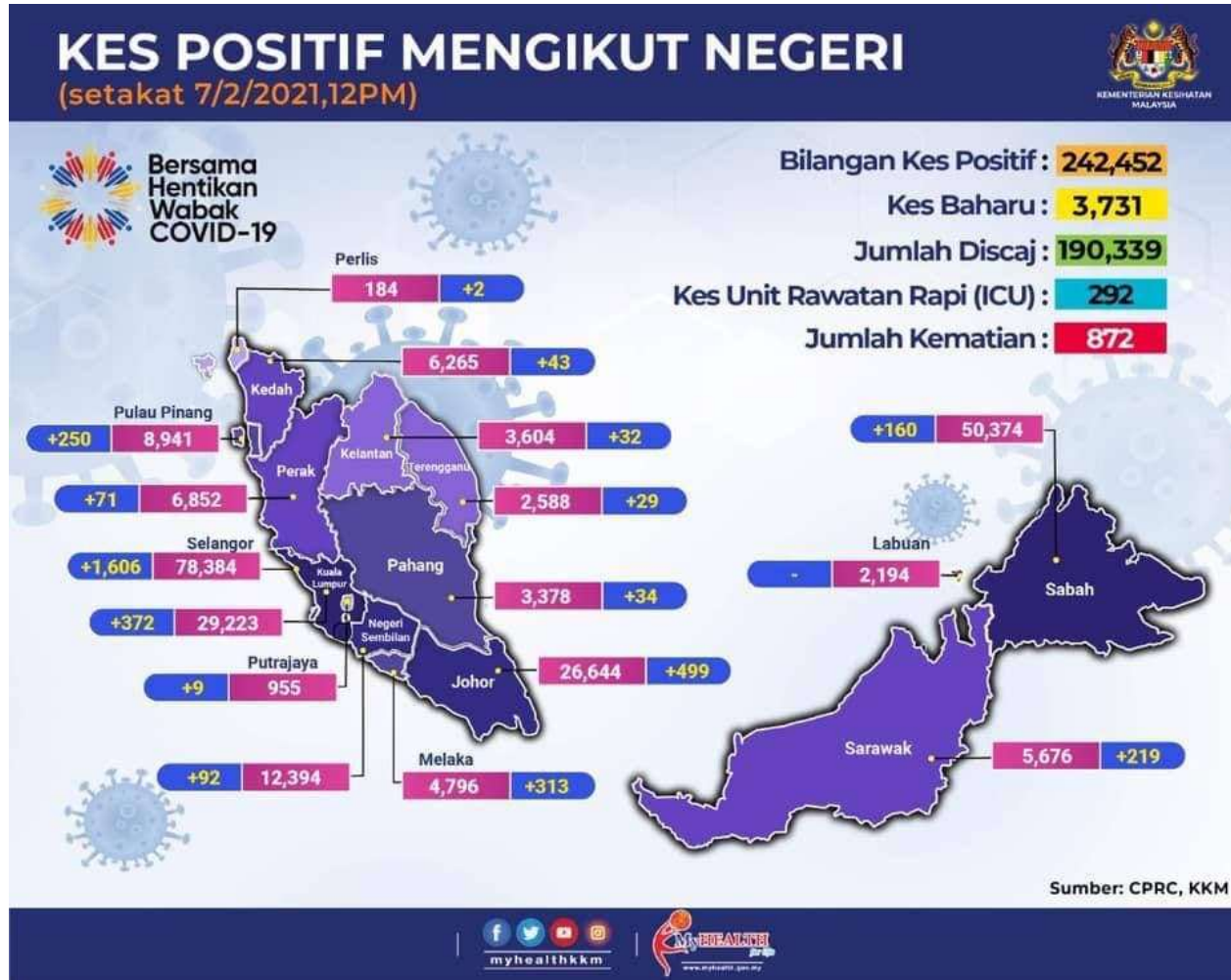
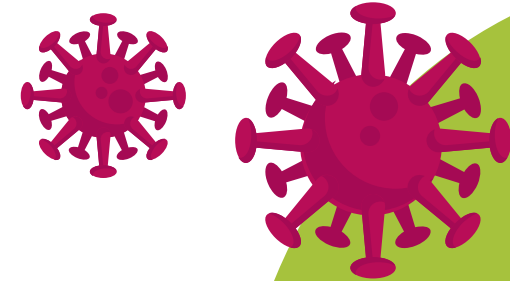


COVID-19 Alert : 07 February 2021



Highlights (as at 7 Feb 2021):

Active cases: 51,241 (↓116 from the previous day)

Recovery cases: 190,339 (↑3,369 from the previous day)

Deaths: 872 (↑15 from the previous day)



**UPDATED CNY SOP (FEB 7)****Family Reunion Dinner**

Limited to 15 family members living within a 10km radius, and must not involve inter-state or inter-district travel

*TheStar***UPDATED CNY SOP (FEB 7)****Activities at temples on Feb 11,12 & 19**

- No more than 30 persons in the premises at any one time, with face-mask and physical distancing
- The time limit for praying is 30 minutes, followed by sanitation works for another 30 minutes before prayers resume

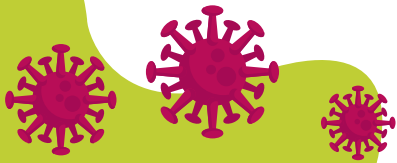
*TheStar***UPDATED CNY SOP (FEB 7)****Activities at temples on Feb 11,12 & 19**

- Praying times between 6am and 2pm
- For the Hokkiens, prayers are allowed within the house compound on the night of Feb 19 (aka Jade Emperor's birthday)

Officers will be appointed to monitor the SOP under Section 3 of the Prevention and Control of Infectious Diseases Act 1988 (Act 342)

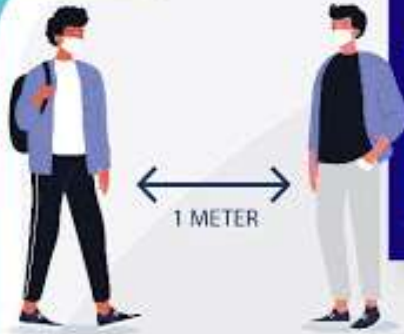
TheStar

- **Please stay at home** and celebrate the “*OX-picious*” occasion with your close family members
- **Avoid visiting houses**, you can stay connected to your family, relatives and friends virtually
- You are **strongly encouraged to wear mask** if there’s visitor at your house. Prevention better than cure





COVID-19
#KitaTeguhKitaMenang



Risiko jangkitan COVID-19 lebih tinggi apabila seseorang batuk, bersin atau bercakap dalam jarak dekat.



Kementerian
Kesihatan
Malaysia



Jarak fizikal lebih dari 1 meter boleh **mengurangkan** jangkitan **COVID-19** sebanyak **82%** dan setiap meter tambahan boleh **menggandakan perlindungan.**

Penggunaan **pelitup muka** boleh mengurangkan risiko jangkitan sebanyak **85%.**



MYHEALTHKKM

Sumber : The Lancet

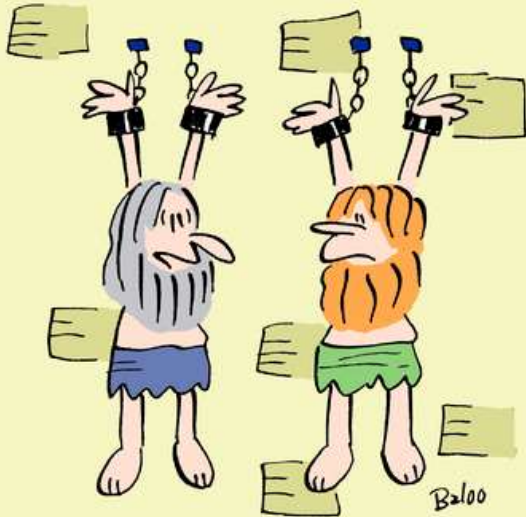


REMINDER

Non-Compliance of CMG & ERP



"I'VE BEEN HERE SO LONG I
DON'T REMEMBER WHAT I DID,
BUT IT HAD SOMETHING TO
DO WITH NON-COMPLIANCE."



In a nutshell:

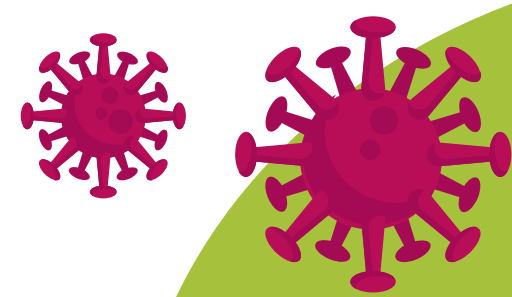
- Our COVID-19 Management Guideline (CMG) & Emergency Response Protocol (ERP) provides guidance for dealing with the COVID-19 outbreak to **minimise disruptions to the operation** and to **ensure that the business remains viable** during the outbreak period.
- Non-compliance is serious as it may **pose risks to our company's (or even group's) reputation**.
- ERT strives to provide advice for cases reported to us **within 1 hour from the time it is reported**.

What this entails?

- Cases of non-compliance will be **highlighted to the respective Head of Department** (c/c Head of Human Resource).
- **Disciplinary actions** including warning and/or dismissal may be taken upon the completion of thorough investigation.



REMINDER



**“Dalam perang
melawan COVID-19,
manteranya
tetap sama,
kepatuhan
kepada SOP
yang tinggi”**

**TAN SRI DR NOOR HISHAM
ABDULLAH**

Ketua Pengarah Kesihatan

#HapusCOVID19

astro
AWANI

