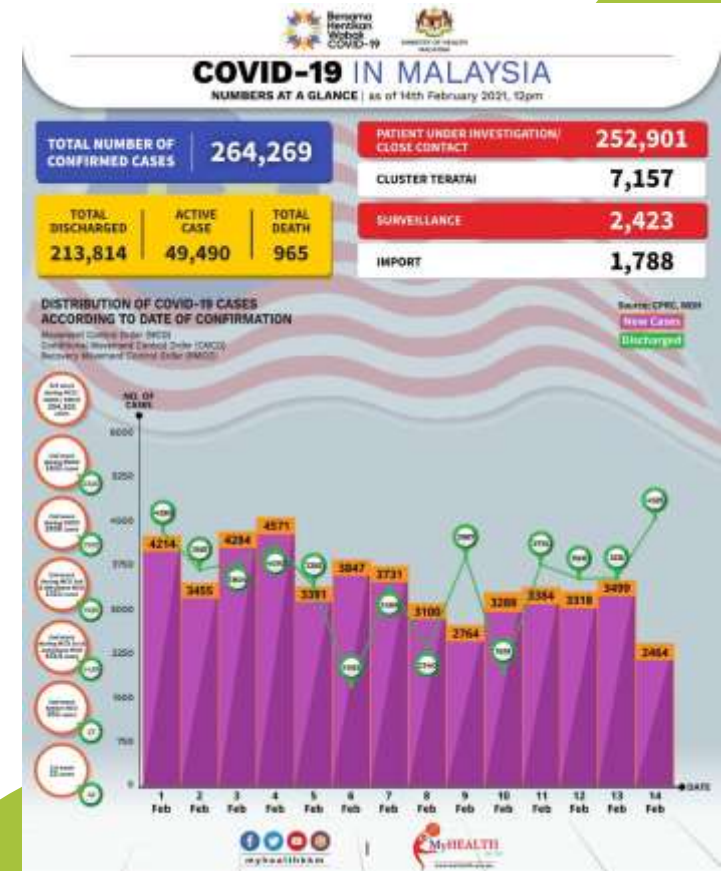
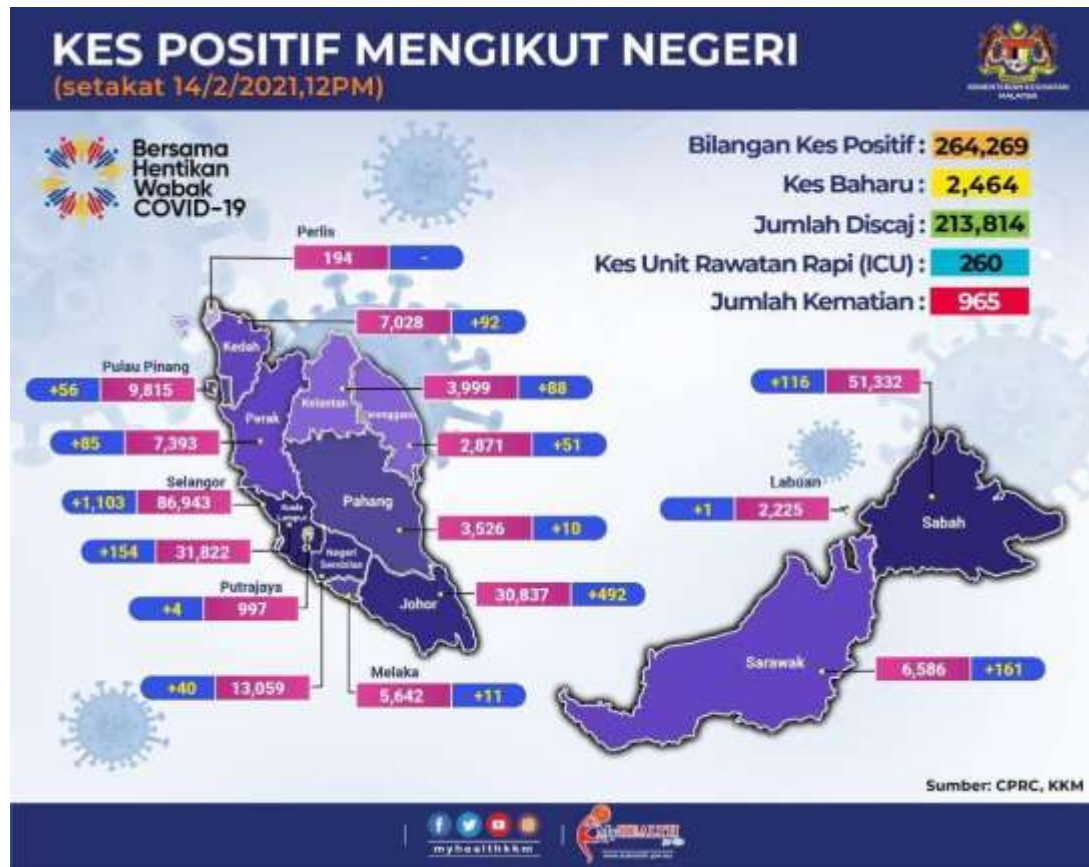


COVID-19 Alert : 15 February 2021



Highlights (as at 14 Jan 2021):

- 2,464 new cases recorded with highest increase in Selangor (+1,103), representing 45%, followed by Johor (+492) and Sarawak (+161).
- 11 new clusters were detected, out of which 9 involving work place and 1 each involving community and religion.
- 4,525 new recoveries (A new daily record)



INFO



COVID-19 PENGURUSAN KES COVID-19 TANPA GEJALA ATAU BERGEJALA RINGAN DI RUMAH

1 Pemantauan pesakit akan dibuat oleh pasukan perubatan dan juga secara sendiri melalui aplikasi MySejahtera menggunakan Borang Health Assessment Tool

2 Pesakit akan dihubungi oleh COVID-19 Assessment Centre (CAC) atau Pejabat Kesihatan Daerah (PKD) untuk penilaian kesihatan selanjutnya

Kementerian Kesihatan Malaysia

Bersama Hentikan Wabak COVID-19

SCAN ME

COVID-19 PENGGUNAAN APLIKASI MYSEJAHTERA BAGI PEMANTAUAN KES COVID-19

Aplikasi MySejahtera akan memaklumkan sekiranya anda telah disahkan positif menerusi "SMS dan Push Notification" (mulai 15 Januari 2021)

MySejahtera

Perlu Dilakukan

Helpdesk

MySejahtera: Bagaimana kami boleh membantu anda?

- Saya tidak boleh membuat pendaftaran
- Saya tidak boleh log masuk ke aplikasi
- Saya menghadapi masalah untuk mengimbas kod QR/ tidak boleh Check-in
- Saya ingin bertanya mengenai kategori risiko / penilaian kesihatan
- Saya ingin melaporkan butiran peribadi
- Hal-hal lain
- Saya telah disahkan COVID-19 positif dan sedang menunggu pengalihan ke KKM

Maklumat gejala akan disalurkan ke COVID-19 Assessment Centre

Anda akan dihubungi oleh CAC untuk penilaian lanjut sekiranya perlu

Anda juga boleh melaporkan sendiri status positif melalui HelpDesk MySejahtera

Kementerian Kesihatan Malaysia

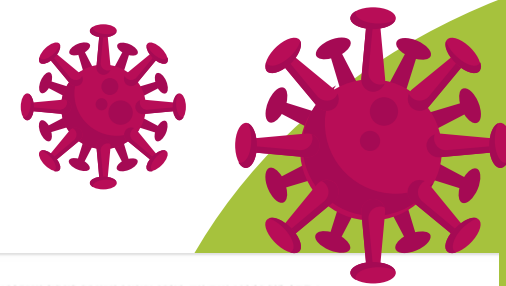
Bersama Hentikan Wabak COVID-19

SCAN ME

- The CAC's role is to identify patients who are suited for home monitoring.
- The CAC staff will monitor and evaluate their progress using the Home Assessment Tool (HAT).
- CAC would also identify patients who need referrals to Covid-19 Quarantine and Low-Risk Treatment Centres (PKRC) or hospitals, namely categories one and two patients who are not suitable for home treatment.



INFO



DAILY ESTIMATED RT AS OF 13 FEBRUARY 2021

NO	MALAYSIA*	RT	95% CONFIDENCE INTERVAL
1	MALAYSIA (FIGURE 1)	0.92	0.91–0.93

NO	STATE**	RT	95% CONFIDENCE INTERVAL
2	Selangor (Figure 2)	0.89	0.88–0.90
3	Sabah (Figure 3)	0.80	0.77–0.83
4	P. Pinang (Figure 4)	1.06	1.01–1.11
5	Johor (Figure 5)	1.01	0.99–1.03
6	Kelantan (Figure 6)	0.92	0.85–0.99
7	Melaka (Figure 7)	1.07	1.03–1.12
8	WP Kuala Lumpur (Figure 8)	0.95	0.93–0.98

* R value for Malaysia is estimated with a 7 day moving window

**R value for States is estimated with a 14 day moving window (a 14 day window is used to decrease inaccuracies and extreme variable R value estimates in States with low case numbers and with widely fluctuating case trends. However this would produce R value estimates that are less sensitive)

DAILY ESTIMATED RT AS OF 13 FEBRUARY 2021

NO	STATE**	RT	95% CONFIDENCE INTERVAL
9	WP Labuan (Figure 9)	0.65	0.53–0.79
10	WP Putrajaya (Figure 10)	0.73	0.61–0.87
11	Negeri Sembilan (Figure 11)	0.95	0.90–1.00
12	Kedah (Figure 12)	1.04	0.98–1.10
13	Pahang (Figure 13)	0.86	0.79–0.93
14	Perak (Figure 14)	0.95	0.90–1.00
15	Terengganu (Figure 15)	0.82	0.76–0.88
16	Sarawak (Figure 16)	0.96	0.92–1.00
17	Perlis (Figure 17)	0.77	0.49–1.11

* R value for Malaysia is estimated with a 7 day moving window

**R value for States is estimated with a 14 day moving window (a 14 day window is used to decrease inaccuracies and extreme variable R value estimates in States with low case numbers and with widely fluctuating case trends. However this would produce R value estimates that are less sensitive)

- R_0 , pronounced “**R naught**,” is a mathematical term that **indicates how contagious an infectious disease is**. It’s also referred to as the reproduction number.
- For example, if a disease has an R_0 of 18, a person who has the disease will transmit it to an average of 18 other people. That replication will continue if no one has been vaccinated against the disease or is already immune to it in their community.
- Malaysia’s COVID-19 infectivity rate saw a marginal increase to **0.92** after the number of cases remained at four digits, with 3,499 infections reported.
- **Melaka** recorded the highest daily estimated infectivity rate of 1.07 among all states as of Feb 13.
- The Ministry of Health (MoH) is targeting a R naught value or infectivity rate of **below 0.5** through public health activities in preventing and controlling the spread of the Covid-19 epidemic.





VAKSIN Pfizer-BioNTech

FASA 1

26 FEBRUARI 2021

Pengagihan secara berperingkat ke seluruh negara sejurus bekalan vaksin tiba di Malaysia.

Tempoh pengagihan

1-2 MINGGU

Bekalan dos dibeli

12.8 JUTA

Bekalan dos tambahan

12.2 JUTA



KAJIAN KLINIKAL FASA 3

VAKSIN COVID-19 (SARS-COV 2)

- ✓ Ditaja Institusi Biologi Perubatan Akademik Sains Perubatan China (IMBCAMS)
- ✓ Setakat 1 Februari 2021, seramai 141 sukarelawan telah menerima suntikan vaksin.
- ✓ 3,000 sukarelawan berusia 18 tahun ke atas.
- ✓ Mengikut kriteria yang ditetapkan.

Diterbitkan : 02022021

Sumber : Tan Sri Dr. Noor Hisham Abdullah, Ketua Pengarah Kesihatan



Majlis Keselamatan Negara



@MKNUPM



Majlis Keselamatan Negara (Rasmi)



@mkn_rasmi



REMINDER



VAKSIN TERBAIK

Masa kini bagi menangani COVID-19 ini adalah **DIRI KITA SENDIRI** dengan amalan norma baharu dalam kehidupan.

Terus patuhi SOP yang ditetapkan

Amalkan Norma baharu

Ditiriskan: 15 Disember 2020

Bersama Hentikan Wabak Covid-19

Majlis Keselamatan Negara @MKNJPM Majlis Keselamatan Negara (Rasmi) @mkn_rasmi



REMINDER



01



Patuhi arahan kuarantin di rumah
terutamanya individu yang disyaki
kontak rapat kes positif sehingga
tempoh kuarantin tamat.

02



Jaga diri, keluarga & komuniti.
Majoriti individu yang dijangkiti
tidak menunjukkan gejala seperti
demam, batuk & sukar bernafas.

03



Elakkan 3S

- Elakkan tempat SESAK seperti tempat tumpuan orang ramai atau majlis-majlis keramaian.
- Elakkan tempat SEMPIT khususnya tempat tertutup.
- Elakkan SEMBANG DEKAT dan sembang lama.

Tempat yang sesak & sempit pada kebiasaannya merupakan tempat-tempat sukar mengamalkan penjarakan fizikal serta kurangnya pengudaraan yang baik.



Majlis Keselamatan Negara



@MKNJPM



Majlis Keselamatan Negara (Rasmi)



@mkn_rasmi

