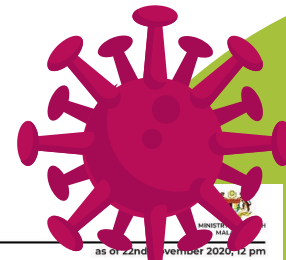


# COVID-19 Alert : 23 November 2020



## KES POSITIF MENGIKUT NEGERI (setakat 22/11/2020, 12 PM)



Bersama  
Hentikan  
Wabak  
COVID-19

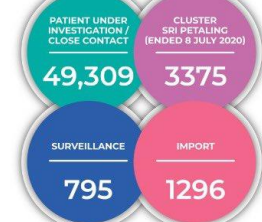
## COVID-19 IN MALAYSIA NUMBERS AT A GLANCE

TOTAL NUMBER OF  
CONFIRMED CASES

**54,775**

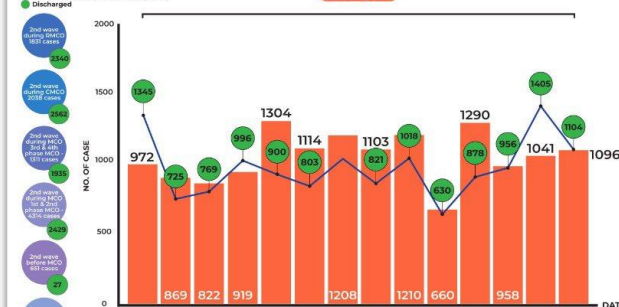
TOTAL DISCHARGED	ACTIVE CASE	TOTAL DEATH
41,597	12,843	335

## CONFIRMED CASES



## DISTRIBUTION OF COVID-19 CASES ACCORDING TO DATE OF CONFIRMATION

2nd wave during RMCO  
3rd wave during RMCO  
4th wave during RMCO  
5th wave during RMCO  
6th wave during RMCO  
7th wave during RMCO  
8th wave during RMCO  
9th wave during RMCO  
10th wave during RMCO  
11th wave during RMCO  
12th wave during RMCO  
13th wave during RMCO  
14th wave during RMCO  
15th wave during RMCO  
16th wave during RMCO  
17th wave during RMCO  
18th wave during RMCO  
19th wave during RMCO  
20th wave during RMCO  
21st wave during RMCO  
22nd wave during RMCO



Ministry of Health Malaysia

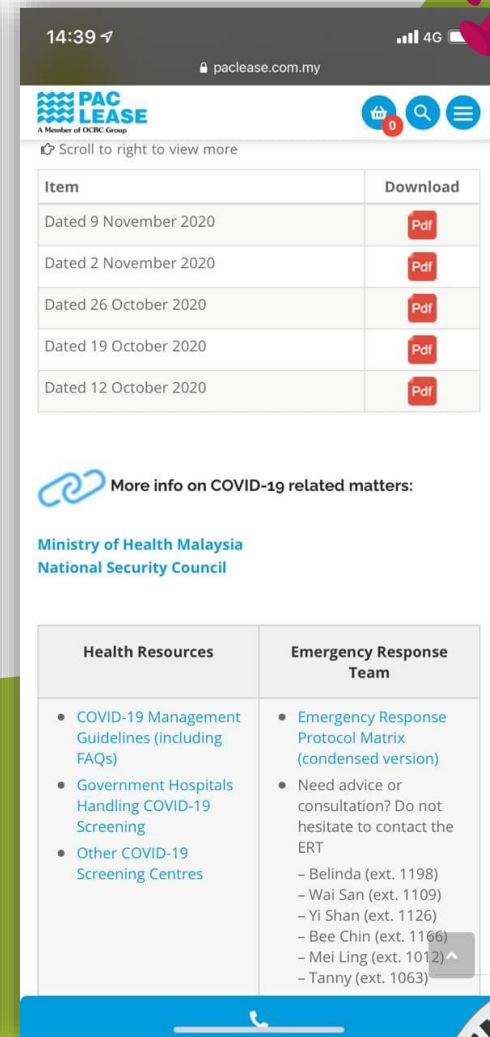
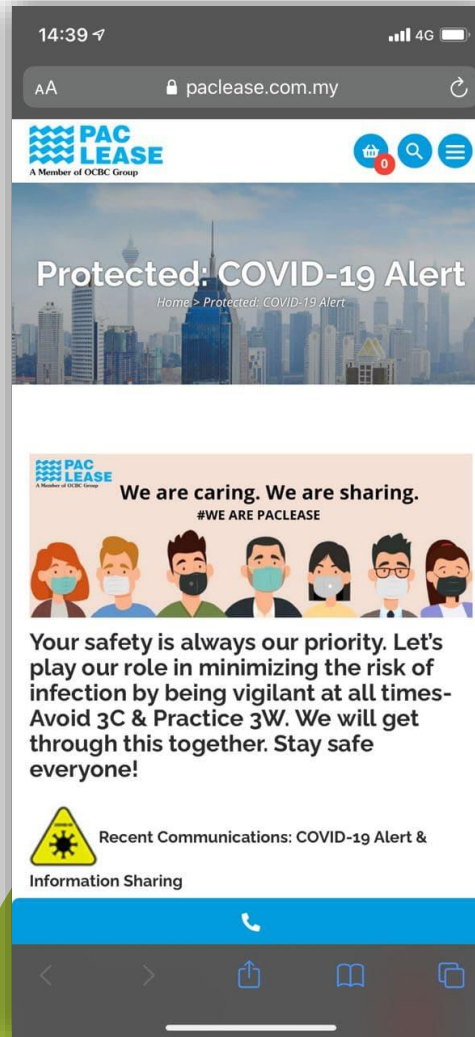
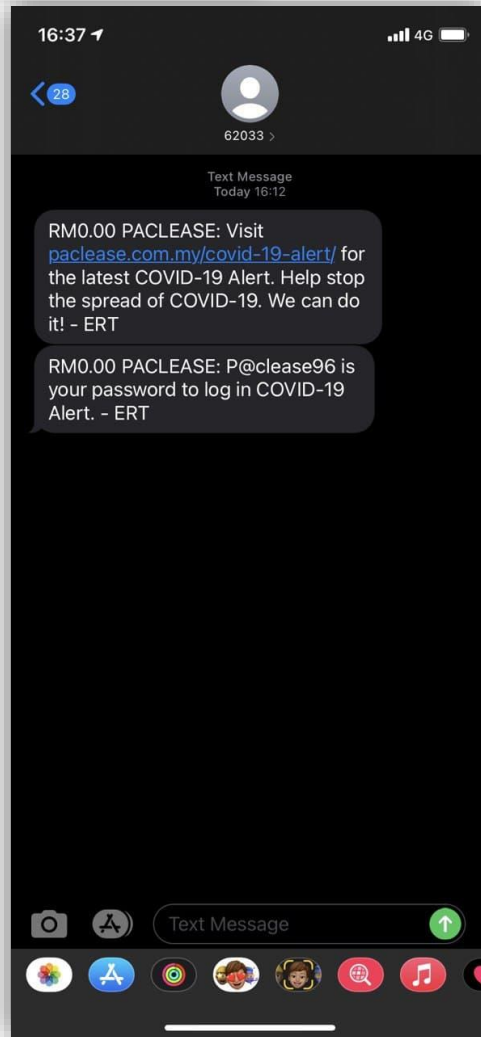


## Highlights (as at 22 Nov 2020):

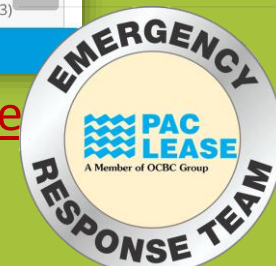
- > 1096 new cases recorded with highest increase in Selangor (+603), followed by Sabah (+311).
- > Selangor has registered the highest increase in new cases for 2 days consecutively.
- > Out of the 603 new cases in Selangor, 502 cases or 83.3% are linked to the Teratai Cluster which involves glove manufacturer Top Glove Corp Bhd's workers dormitory in Klang, Selangor.
- > 3 new clusters detected – Barat (Penang & Perak), Bakti (N. Sembilan) and Bayam Indah (Kedah).



# INFORMATION



Information is accessible via handphone anytime and anywhere





## Malaysia awaiting Covid-19 vaccine clinical trial data from manufacturers — Health DG

[-] A [+]

PUTRAJAYA (Nov 21): Malaysia is awaiting data from the third phase of clinical trials from all Covid-19 vaccine manufacturing companies before deciding on the procurement of the vaccine.

Health director-general Tan Sri Dr Noor Hisham Abdullah said the data was important to enable the Ministry of Health (MOH) to ensure that the vaccine is effective and safe for use.

So far, there were 12 Covid-19 vaccine manufacturing companies that were in the midst of conducting the third phase of clinical trials, he said.

“For now, we still don’t know the effectiveness of the vaccine as the data from the third phase of the clinical trials has yet to be published.

“Once we get the data, only then we can consider using it and so far we have only heard about its effectiveness through media reports,” he said in the daily Covid-19 media briefing here today.

Dr Noor Hisham said so far, the available Covid-19 vaccine has not yet been registered with the US Food and Drug Administration (FDA).

“Just like medicines, vaccine must also be registered with the National Pharmaceutical Regulatory Agency (NPRA),” he said.

On the MOH’s projection when the third wave of Covid-19 in the country would end, Dr Noor Hisham said there was no estimation when the situation would subside and the ministry would continue implementing health control measures to curb the spread of the virus.

<https://www.theedgemarkets.com/article/malaysia-awaiting-covid19-vaccine-clinical-trial-data-manufacturers—health-dg>





# INFORMATION



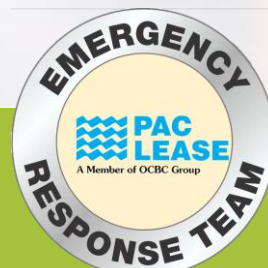
No. of tests per 1000 population (Cumulative positivity rate, %)			
Malaysia	76.40 (2.00%)	South Korea	55.11 (1.10%)
Japan	24.85 (3.90%)	Thailand	17.42 (0.30%)
Sweden	59.20 (11.70%)	Singapore	197.72 (5.00%)
New Zealand	252.45 (0.10%)	Australia	374.87 (0.30%)
United Kingdom	508.88 (4.10%)	United States	516.98 (6.50%)

Data as of 20 November 2020

Our World  
in Data



Source : Our World in Data, Oxford Martin School, University of Oxford



# INFORMATION

COVID-19

#kitateguhkitamenang

## PAKAI PELITUP MUKA LINDUNGI DIRI DAN ORANG LAIN

### RISIKO JANGKITAN

Tanpa  
pelitup muka



TINGGI



Tanpa  
pelitup muka

Dengan  
pelitup muka



SEDERHANA



Tanpa  
pelitup muka

Dengan  
pelitup muka



RENDAH



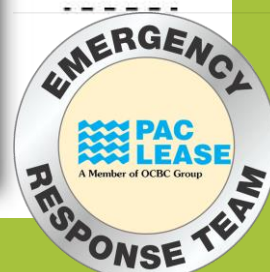
Dengan  
pelitup muka



Kementerian  
Kesihatan  
Malaysia



MYHEALTHKKM





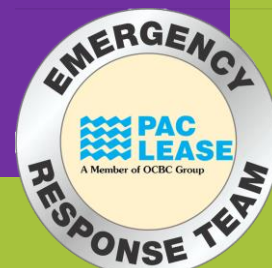
REMINDER

How can I help to protect  
myself, my family and others?

THE  
VIRUS  
STOPS  
HERE

Protecting is respecting.

Small action. **BIG DIFFERENCE.**



# SCENARIO



Betty is Pac Lease's staff. Her ex-university mate Diana invited her for dinner at her house, together with Susan. Diana was confirmed COVID-19 positive later.

Tier 1: Diana

Tier 2: Betty & Susan

Tier 3: Jason (Close contact of Betty in the office)

- Betty is required to work from home under home surveillance and to undergo COVID-19 screening.
- Jason is advised to work from home.
- ERT will provide further advise once Betty's screening result is available.
- **Office staff should stay calm and to remain vigilant at all times by wearing mask, observing good personal hygiene and maintaining physical distancing.**

