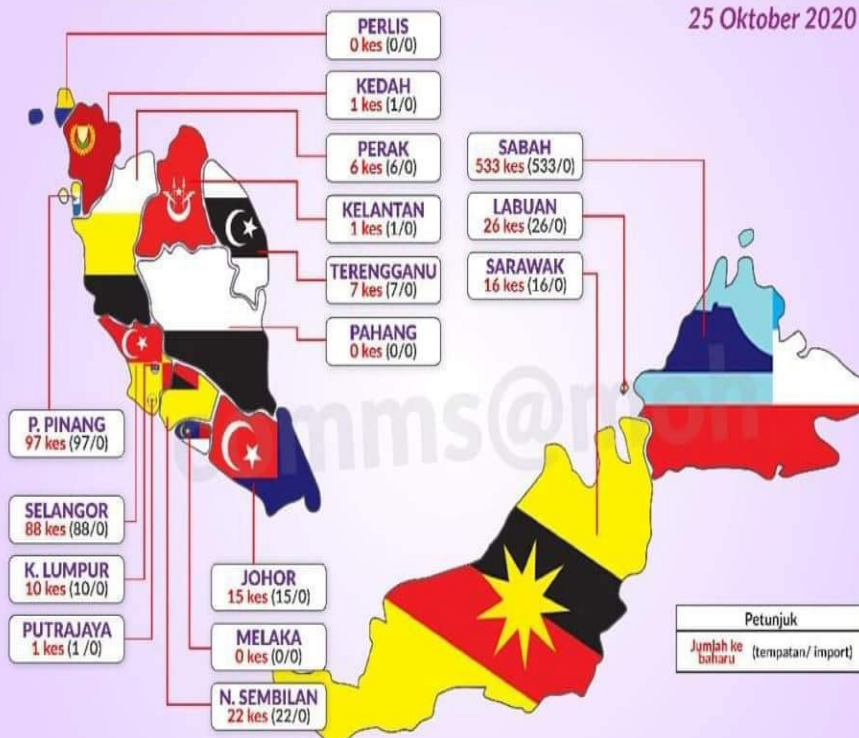




## COVID-19: Kes baharu mengikut negeri



25 Oktober 2020



**Jumlah kes baharu: 823**  
**Tempatan: 823    Import: 0**

BER: CPRC KEBANGSAAN



**JABATAN KESIHATAN  
NEGERI SEMBILAN**

TEMPATAN 88

**LUAR NEGARA 0**

	KES PENULARAN TEMPATAN	KES JANGKITAN LUAR NEGARA	JUMLAH
KUMULATIF KES	3,671	297	3,968
KES DISCAJ (+164)	2,738	295	3,033
KES KEMATIAN	25	0	25
KES AKTIF	908 (24)	2	910

### KES AKTIF MENGIKUT MUKIM DI DAERAH

GOMBAK						HULU LANGAT						HULU SELANGOR					
MUKIM	KUM.	KES	KES	KES	KES	MUKIM	KUM.	KES	KES	KES	KES	MUKIM	KUM.	KES	KES	KES	KES
	DICAJ	MATI	MATI	MATI	AKTIF		DICAJ	MATI	MATI	MATI	AKTIF		DICAJ	MATI	MATI	MATI	AKTIF
BATU (+1)	205	176*	0	29	(2)	AMPANG	126	109	2	15		AMPANG PECAH	13	13	0	0	
H.KELANG	81	72	1	8	(1)	BERANANG	26	21	1	4		BATANG KALI	19	19	0	0	
KUANG (+2)	62	32*	0	30		CHERAS (+3)	93	70	0	23		HULU BERNAM (+1)	6	3	0	0	
RAWANG	68	42	0	26		K.LANGAT	231	230	0	1		KALUMPANG	2	2	0	0	
SETAPAK (+2)	20	16*	0	4		KAJANG (+13)	360	219	2	139	(2)	SERENDAH (+1)	66	58	1	7	
KUMULATIF	436	338	1	97	(3)	SEMENTIH (+2)	93	85	0	8		BULUH TELUR	0	0	0	0	
						H.SEMENYIH	0	0	0	0		HULU YAM	3	3	0	0	
						KUMULATIF	929	734	5	190	(2)	KERLING	1	1	0	0	
												PERTAK	0	0	0	0	
												RASA	3	3	0	0	
												SG.GUMUT	0	0	0	0	
												SG.TINGGI	0	0	0	0	
												K.KALUMPANG	0	0	0	0	
												KUMULATIF	113	102	1		
KLANG						KUALA LANGAT						KUALA SELANGOR					
MUKIM	KUM.	KES	KES	KES	KES	MUKIM	KUM.	KES	KES	KES	KES	MUKIM	KUM.	KES	KES	KES	KES
	DICAJ	MATI	MATI	MATI	AKTIF		DICAJ	MATI	MATI	MATI	AKTIF		DICAJ	MATI	MATI	MATI	AKTIF
KAPAR (+3)	127	93*	2	32	(2)	TANJUNG 12 (1) (+9)	101	56*	0	45		BTQ.BERJUNTAI	2	2	0	0	
KLANG (+11)	385	281*	3	101	(3)	TANJUNG 12 (2) (+4)	54	43	0	11		BUOK ** (+1)	30	20*	1	9	
KUMULATIF	512	374	5	133	(5)	TLK.PG.GARANG	24	14	0	10		JERAM	15	15	0	0	
						BANDAR	0	0	0	0		K.SELANGOR	12	12	0	0	
						BATU	2	1	0	1		PASANGAN **	4	2*	0	2	
						JUGRA	1	0	0	1		TP.GARANG	18	18	0	0	
						KELANANG	0	0	0	0		AGI-API	1	1	0	0	
						MORIB (+1)	2	0	0	2		HULU TINGGI	0	0	0	0	
						KUMULATIF	184	114	0	70		HUJUNG PMTG.	3	3	0	0	
												KUMULATIF	85	73	1	11	
SABAK BERNAM						PETALING											
MUKIM	KUM.	KES	KES	KES	KES	MUKIM	KUM.	KES	KES	KES	KES						
	DICAJ	MATI	MATI	MATI	AKTIF		DICAJ	MATI	MATI	MATI	AKTIF						
BAGAN NAKHODA OMAR	9	9	0	0		BUKIT RAJA (+3)	101	84	1	16							
PANCANG BEDENA (+1)	8	7	0	1		DAMANSARA (+5)	260	170*	2	88	(5)						
SABAK	6	6	0	0		PETAUNG (+9)	276	156*	3	117	(1)						
SG.PANJANG	1	1	0	0		SG.BULOH (+11)	459	349*	5	105							
PASIR PANJANG	8	8	0	0		KUMULATIF	1,096	759	11	326	(6)						
KUMULATIF	32	31	0	1													
SEPANG																	
MUKIM	KUM.	KES	KES	KES	KES												
	DICAJ	MATI	MATI	MATI	AKTIF												
DENGKIL (+1)	121	86*	0	35	(2)												
LABU (+3)	157	122	1	34	(6)												
SEPANG (+1)	6	5	0	1													
KUMULATIF	284	213	1	70	(8)												

\*\* Pindahan kes dalam daerah

ARGE

**NOTA :**

- NOTA :
- Tambahan Kes Baru (+)
  - Kes Aktif di dalam ( ) adalah kes Import B ( Merentasi Negeri – mendapat jangkitan di negeri lain)
  - Kes Discaj bertanda \* ialah yang mempunyai pertambahan kes discaj.

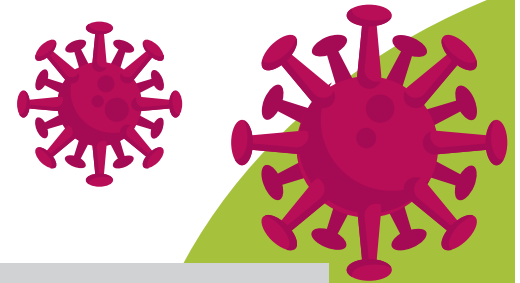
\*\* Pindahan kes dalam daerah

Sumber & Terbitan :  
CRISIS PREPAREDNESS & RESPONSE CENTRE (CPRC)  
JABATAN KESIHATAN NEGERI SELANGOR

Facebook : Jabatan Kesihatan Ne  
Laman Web Rasmi : <http://jknsele>



# INFORMATION



## WHO ARE CLOSE CONTACTS

Individuals directly in contact with Covid-19 positive cases over the last 14-days, such as;

malaymail



Being face-to-face with a Covid-19 positive patient from a distance less than 1 metre



Making physical contact with a Covid-19 positive case

Source: Health Ministry



# INFORMATION

## CLOSE CONTACTS ALSO INCLUDE



Health officials who treated a confirmed Covid-19 case while not wearing the complete personal protective equipment (PPE)

malaymail

Anyone living in the same house as the confirmed Covid-19 case



Those seated close (less than 1m) to a confirmed Covid-19 case in public spaces such as an office, a classroom, a house of worship, eateries etc.



Individuals travelling together and seated nearby (less than 1m) the positive Covid-19 case throughout the journey

Source: Health Ministry



RESEARCH UPDATE: 25 August 2020



## Two metres or one for physical distancing in COVID-19?

Current rules on safe physical distancing are based on **outdated** science

Distribution of viral particles is affected by numerous factors, including **air flow**

Evidence suggests SARS-CoV-2 may **travel more than 2 metres** through activities such as coughing and shouting

Rules on distancing should reflect the multiple factors that affect risk, including ventilation, occupancy, and exposure time.

Source: <https://www.bmj.com/content/370/bmj.m3223>

### In short, we are required to do the following:

- Wear mask (preferably at all time)
- Avoid crowded places
- Avoid indoor meeting (especially poor ventilation)
- Less physical contact (talk less and do not mingle in pantry)

And do wash hands as frequently as possible.



# COVID-19 INFECTION RISK IN VARIOUS SCENARIOS



Type and level of group activity	Low occupancy				High occupancy		
	Outdoors and well ventilated	Indoors and well ventilated	Poorly ventilated		Outdoors and well ventilated	Indoors and well ventilated	Poorly ventilated
Wearing face coverings, contact for short time							
Silent	Green	Green	Green		Green	Green	Yellow
Speaking	Green	Green	Green		Green	Green	Yellow
Shouting, singing	Green	Green	Yellow		Yellow	Yellow	Red
Wearing face coverings, contact for prolonged time							
Silent	Green	Green	Yellow		Green	Yellow	Red
Speaking	Green	*	Yellow		*	Yellow	Red
Shouting, singing	Green	Yellow	Red		Yellow	Red	Red
No face coverings, contact for short time							
Silent	Green	Green	Yellow		Yellow	Yellow	Red
Speaking	Green	Yellow	Yellow		Yellow	Red	Red
Shouting, singing	Yellow	Yellow	Red		Red	Red	Red
No face coverings, contact for prolonged time							
Silent	Green	Yellow	Red		Yellow	Red	Red
Speaking	Yellow	Yellow	Red		Red	Red	Red
Shouting, singing	Yellow	Red	Red		Red	Red	Red

## Risk of transmission

Low ■ Medium ■ High ■

\* Borderline case that is highly dependent on quantitative definitions of distancing, number of individuals, and time of exposure

