

COVID-19 Alert : 11 October 2020

SITUASI TERKINI

COVID-19: KLUSTER AKTIF DENGAN KES BAHARU

11 Oktober 2020

KLUSTER CLUSTER	KES BAHARU NEW CASES	KES KESELURUHAN TOTAL CASES
Kluster Tembok (Kedah & Perak)	1,234 + 16	1,250
Kluster Ramai-Ramai (Sabah)	66+1	67
Kluster Highway (Sabah)	23+1	24
Kluster Benteng LD (Sabah)	975+17	992
Kluster Penjara Reman (Pulau Pinang)	18+1	19
Kluster Tanamera (Sabah)	14+8	22
Kluster Utama (Selangor)	10+5	15
Kluster Tujuh Serangkai (Sabah)	28+8	36
Kluster Simera (Terengganu, Pahang, Selangor)	8+1	9
Kluster Jalan Meru (Selangor, Johor, Kelantan, KL & Putrajaya)	84+2	86
Kluster Kasih (Sabah)	19+15	34

KLUSTER CLUSTER	KES BAHARU NEW CASES	KES KESELURUHAN TOTAL CASES
Kluster Benteng PK (Selangor)	17+1	18
Kluster Bah Manggis (Sabah, Selangor)	8+1	9
Kluster Tasik (Sarawak, Selangor)	10+1	11
Kluster Bah Sahabat (Terengganu)	10+1	11
Kluster Surat (Sabah)	3+22	25
Kluster Sungai Way (Selangor & KL)	11+7	18
Kluster Kau Sing (Sabah)	7+1	8
Kluster Bah Bundle (Labuan)	2+1	3
Kluster Khazanah (Sabah)	13+1	14
Kluster Kuarters (Sabah)	7+1	8

Sumber: CPRC KKM

KLUSTER BAHARU:

Kluster Sungai Way, Selangor
Kluster Bah Bundle, Labuan
Kluster Surat, Sabah
Kluster Khazanah, Sabah
Kluster Kasih, Sabah



How do you know whether you are a contact to a positive case?



Source: MySejahtera

STATUS TERKINI

COVID-19: Kes baharu mengikut negeri

11 Oktober 2020



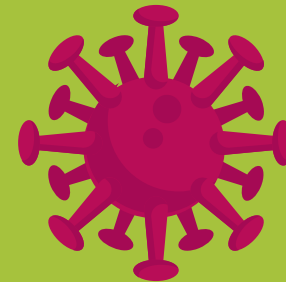
SUMBER: CPRC KEBANGSAAN

If you are a contact to a positive case, the app or the health department will notify you. If you are not contacted, you are not a possible contact. Stay calm, practice STRICT SOP and continue using MySejahtera.



Announcement (1/2)

- Masks will be provided to HQ staff for the time-being, in view of the recent spike in Covid-19 cases in the Klang Valley.
- Staff is **COMPULSORY** to wear mask:
 - when you walk away from your work station
 - when you interact with people face-to-face
- Staff need to maintain physical distance of at least 1 metre from the next person.

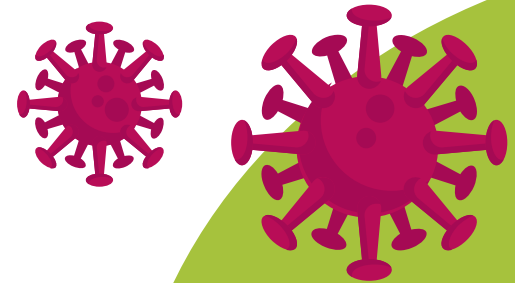


Announcement (2/2)

- Staff is encouraged to do WFH (*HODs will do the needful arrangement*)
- Document handling – staff is required to place documents on the table provided at the main entrance of each floor, to minimise physical contact amongst staff.
- Wash your hands frequently.



Headlines



- Selected areas in Klang and Sabah are now under Conditional Movement Control Order.
- Only essential services are allowed to operate.
- Since the Selangor State Govt has decided that workplace can operate as usual with the strict adherence to SOP imposed, our Klang branch's operation remains uninterrupted.
- Our Kota Kinabalu and Sandakan Team are working from home currently until further notice.



REMINDER

Putuskan Rantai COVID-19



Jika tidak dapat dielakkan jaga jarak 1 meter

ELAK
3S / 3C



1

Sesak

(crowded places)

Tempat yang sesak

2

Sempit

(Confined spaces)

Tempat sempit dan tertutup

3

Sembang dekat

(close conversation)

Bersembang dekat-dekat

AMALKAN
3W



Wash (cuci)

Kerap cuci tangan dengan air dan sabun



Wear (pakai)

Pakai pelitup muka



Warn (amaran)

• Jangan bersalaman atau bersentuhan

• Amalkan etika batuk dan bersin

• Lakukan disinfeksi

• Duduk rumah

• Dapatkan rawatan jika bergejala

#KitaTeguhKitaMenang

